

M-1200



M-1200

M-1200 Sliding Glass Storm Doors are designed for use with M-800 and M-1100 Series Sliding Glass Patio Doors, as well as other makes. M-1200 Storm Doors provide an additional barrier against cold and noise to ensure maximum indoor comfort in residential and light commercial applications.

M-1200 Storm Doors combine the beauty and long life of aluminum with the added security of a tamper-resistant door. When used with M-800 or M-1100 Sliding Glass Patio Doors, the double-glazed panels offer outstanding thermal performance, producing a U-Value of $0.37 \text{ Btu/H/ft}^2, ^\circ\text{F}$ and minimizing condensation and frost on the primary door. They also provide excellent noise abatement, producing an STC rating of 45.

Compared to vinyl storm doors, M-1200 aluminum doors offer distinct advantages. Aluminum has a longer life span and won't crack or warp.

M-1200 Storm Doors feature standard colors of white, bronze, and sandstone, with custom colors and sizes also available.

The M-1200 Sliding Glass Storm Door is ideal for a wide variety of additional applications, including trophy cases, office pass-throughs, mall entries, and guard stations. Because of its sound reduction qualities, the M-1200 has become a popular choice of airport authorities for their noise abatement programs.





Adds Outstanding Thermal and Noise Protection

M-1200 Sliding Glass Storm Doors deliver maintenance-free thermal and acoustic performance in even the most demanding applications. Their special features give years of comfort and security.

Coped frame corners for tighter connections and improved air and water resistance

5/8" glazing with 1/8", 3/16", and 1/4" available, for improved thermal performance

Exclusive Versi-Panel design allows multiple three-panel arrangements, plus option of rearranging panels during installation

Specially designed frame mounts easily over most conventional patio doors

Heavy-duty aluminum panels add structural strength, keep door from warping, and increase forced entry resistance

Full-perimeter weather stripping helps reduce air infiltration

M-1200 doors are AAMA certified. For maximum size and configuration options, consult with factory.

M-1200

M-1200™ Series Specifications

Sliding Glass Doors: Completely fabricated at the factory and shipped knocked down (KD). Carton includes all components, hardware, and fasteners for assembly.

Material: Main frame and panel members are extruded aluminum alloy 6063-T5. Fasteners are stainless steel to meet ASTM specifications.

Frame: The frame consists of a head, sill, and jambs designed for joining with two fasteners at each corner.

Weather Stripping: All panels are double weather stripped to ensure a tight seal and minimize air infiltration.

Hardware: Sturdy pull and latch set. Door locks securely and operates easily.

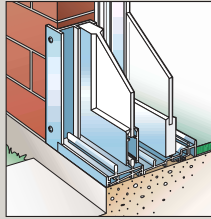
Finish: Doors are available in white, bronze, or sandstone finishes.

Glazing: All doors to be glazed in accordance with ANSI Z97.1-97. Glass is secured in the panel by one-piece marine glazing system. All stock doors will have 5/8" marine glazing system with welded corners as the standard. Other options available include 1/8", 3/16", and 1/4" without welded corners.

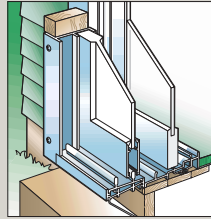
Installation: Assembly and installation shall be done in accordance with???? Aluminum standard installation instructions and standard construction and industry practices. Doors may be installed with mounting fin to the

One year warranty on all parts. Optional finish warranties available.

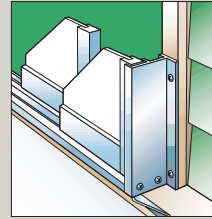
Installation options



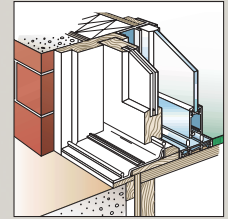
Masonry Construction



Frame Construction (wood block)



Frame Construction



Internally Applied Door Only

| Nominal Size | Actual Frame Size* | Glass Size |
|-------------------------|--------------------|---------------------|
| 5/0 x 6/8 two panels | 59-1/2" x 80-1/4" | 5068 28" x 76" (2) |
| 6/0 x 6/8 two panels | 71-1/2" x 80-1/4" | 6068 34" x 76" (2) |
| 8/0 x 6/8 two panels | 95-1/2" x 80-1/4" | 8068 46" x 76" (2) |
| 9/0 x 6/8 three panels | 108-1/8" x 80-1/4" | 9068 34" x 76" (3) |
| 12/0 x 6/8 three panels | 144-1/8" x 80-1/4" | 12068 46" x 76" (3) |

*Does not include flange

inside or outside, depending on the particular job, with panel arrangement as desired.

All 2-panel doors are fully reversible. All 3-panel models with exclusive Versi-Panel design.

Four panel option available. Choice of different panel arrangements, plus the option of rearranging them during installation.

Optional Features:

- Inside pull
- Aluminum sill brace
- Key lock
- Head and jamb extenders

Tamper-Resistant Pulls



Manufacturer of Certified Products

Recycled Aluminum

The M-1200 Series is manufactured with aluminum containing a high recycled metal content. Remelting recycled

aluminum requires only 5% of the energy needed to produce primary aluminum, and all of the metal's properties are retained.