

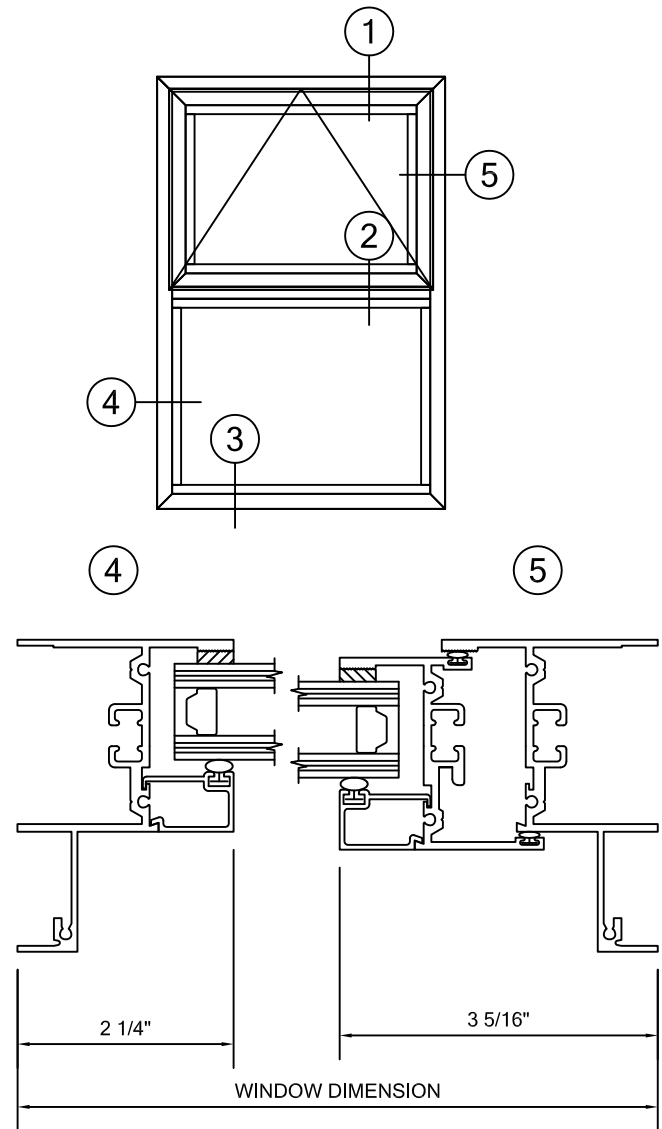
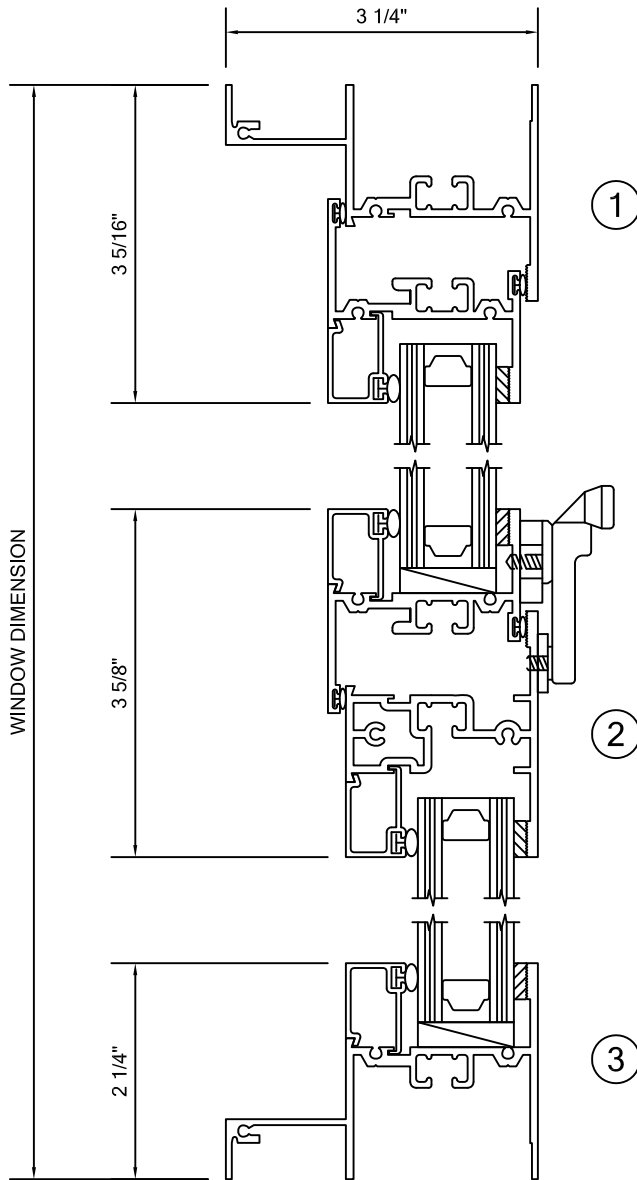
# ALLIANCE WINDOW COMPANY, INC

## Commercial Aluminum Windows & Doors

**PRODUCT INFORMATION:**  
FIXED/ PROJECTED WINDOW  
2000 SERIES

- 3-1/4" FRAME DEPTH
- MFG CODE: 2300 POOG
- AAMA C-70 RATED
- CRF OF 58
- STC 39
- 105 PSF STRUCTURAL
- 12 PSF WATER

\*NON-THERMAL FRAME SHOWN ALSO  
AVAILABLE WITH THERMAL FRAMING



\*FRAMING SHOWN AS EQUAL LEG, ALSO AVAILABLE IN NAIL FIN,  
FLANGE FRAME AND PROJECT SPECIFIC APPLICATIONS.